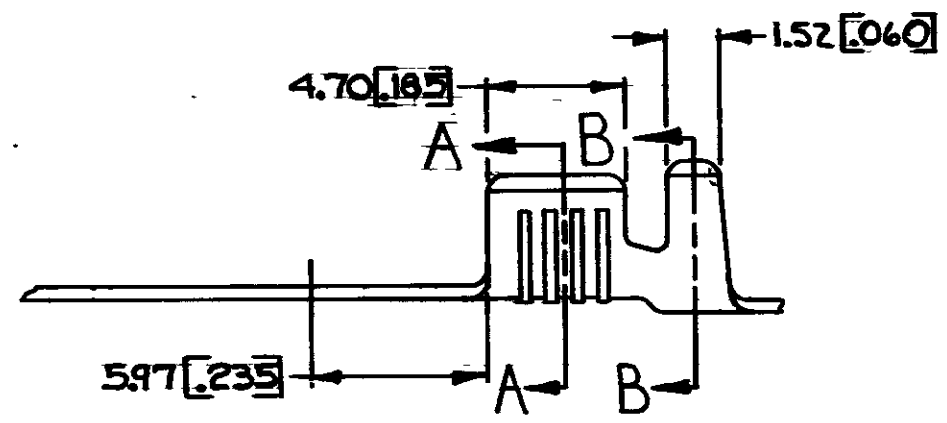
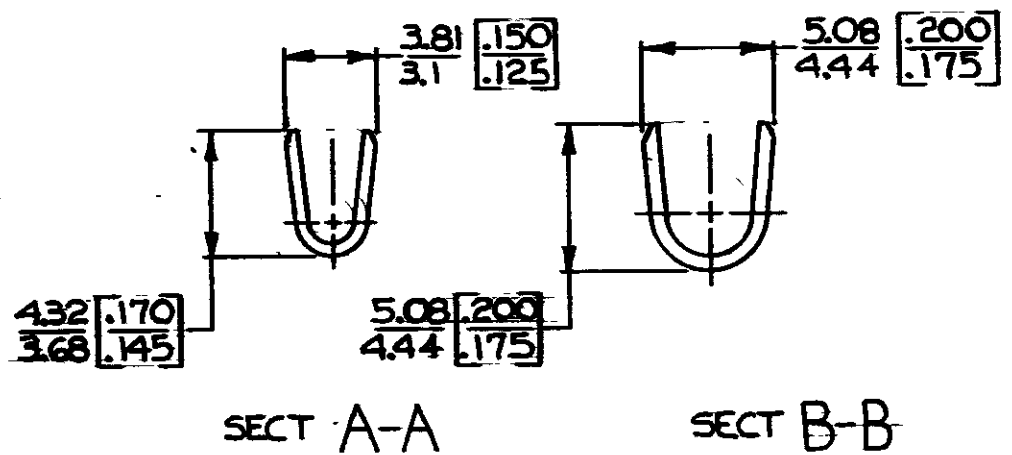
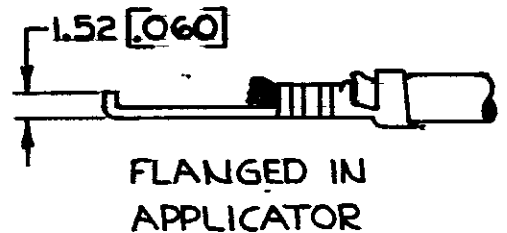
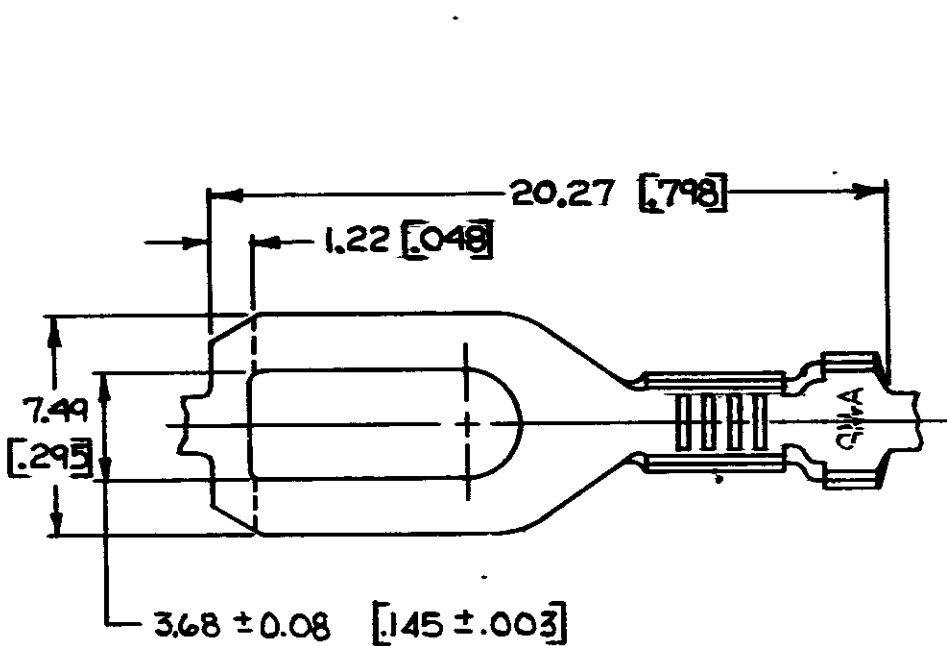


© COPYRIGHT 1964 BY AMP INCORPORATED, HARRISBURG, PA. ALL INTERNATIONAL RIGHTS RESERVED. AMP INCORPORATED PRODUCTS COVERED BY U. S. AND FOREIGN PATENTS AND/OR PATENTS PENDING.

REVISIONS					
P	ZONE	LTR	DESCRIPTION	DATE	APPROVED
✓		D	REDRAWN/REVISED A-3943	6/21/78	DEF/SS
✓		E	INSUL. SUPP LENGTH AF-0781	2-20-85	RLS/GY
✓		F	REVISED AF1994	7/1/86	SS/RPF
✓		G	OBS -1 AF-4503	5/19/88	GY



M 3.5 #6	0.8 - 2.0mm ² [18 - 14]	2.54 - 3.56 [0.100 - 0.140]	TIN NONE	0.46 [0.018] BRASS	60773-2A 60773-2 60773-1A 60773-1
STUD SIZE	WIRE SIZE	INSULATION RANGE	FINISH	MATERIAL	PART NO

UNLESS OTHERWISE SPECIFIED DIMENSIONS ARE IN MILLIMETERS TOLERANCES ON: DECIMALS ±0.30 [0.015] ANGLES ±1°	CONTRACT NO	AMP INCORPORATED Harrisburg, Pa.
	DR CHKD APPD APPD DSGN APPD OTHER APPD	
MATERIAL SEE TABLE	FINISH SEE TABLE	SIZE B
		CODE IDENT NO 00779
		DRAWING NO 60773
		SCALE
		SHEET

- CONTINUOUS STRIP, ON REELS
 - DIMENSIONS IN BRACKETS ARE IN INCHES.
- ⚠ SUFFIX LETTER MUST BE USED ONLY WHEN ORDERING APPLICATOR TOOLING.

METRIC